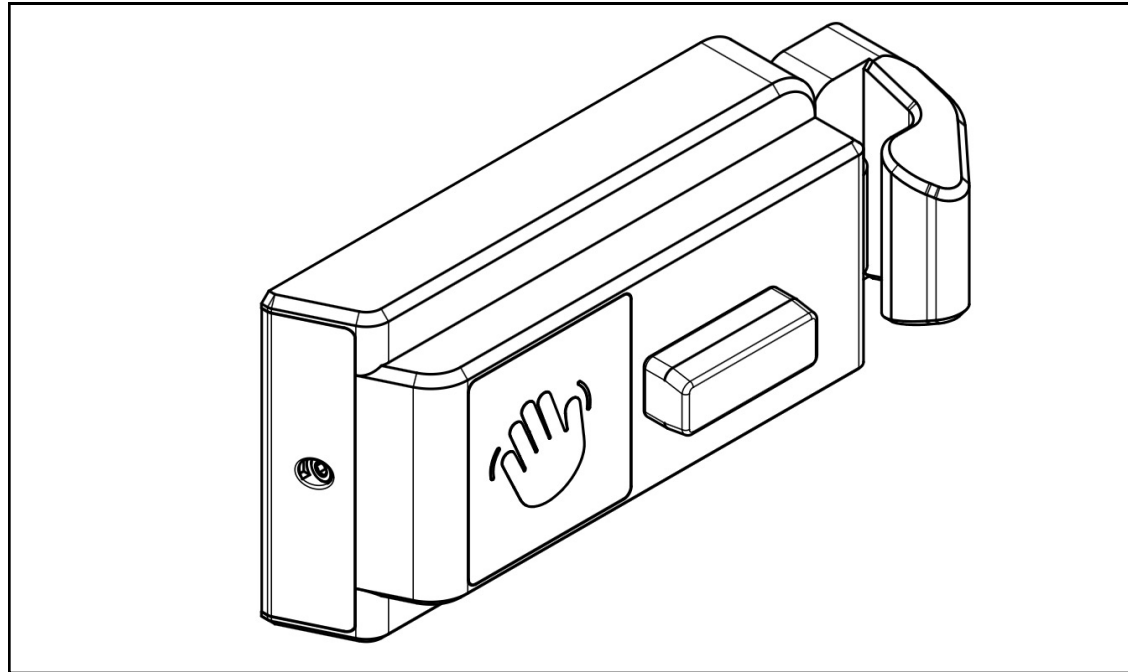




# Technical Specifications



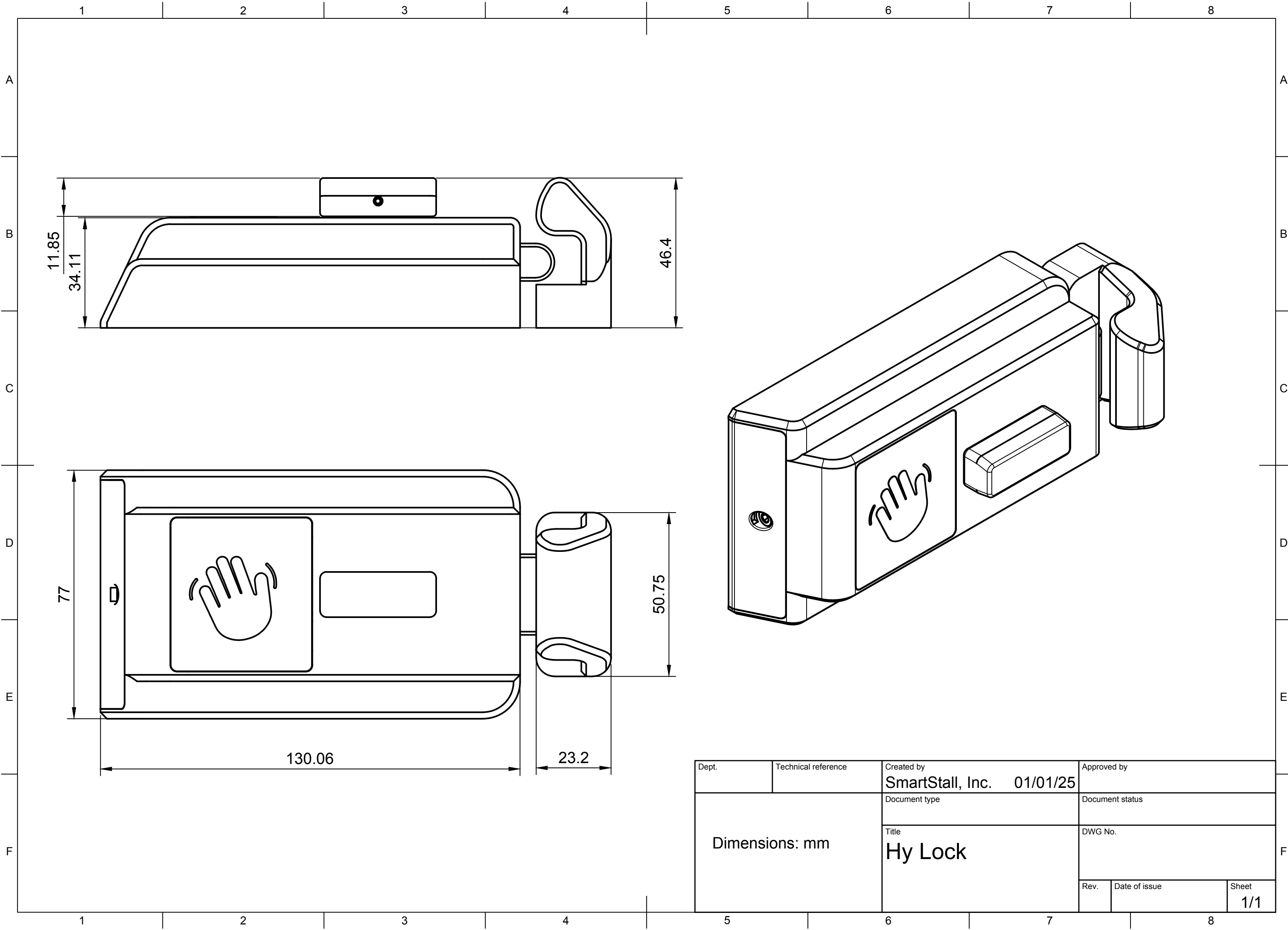
**Finish:** Matte Black, Brushed Stainless Steel, Anodized Aluminum

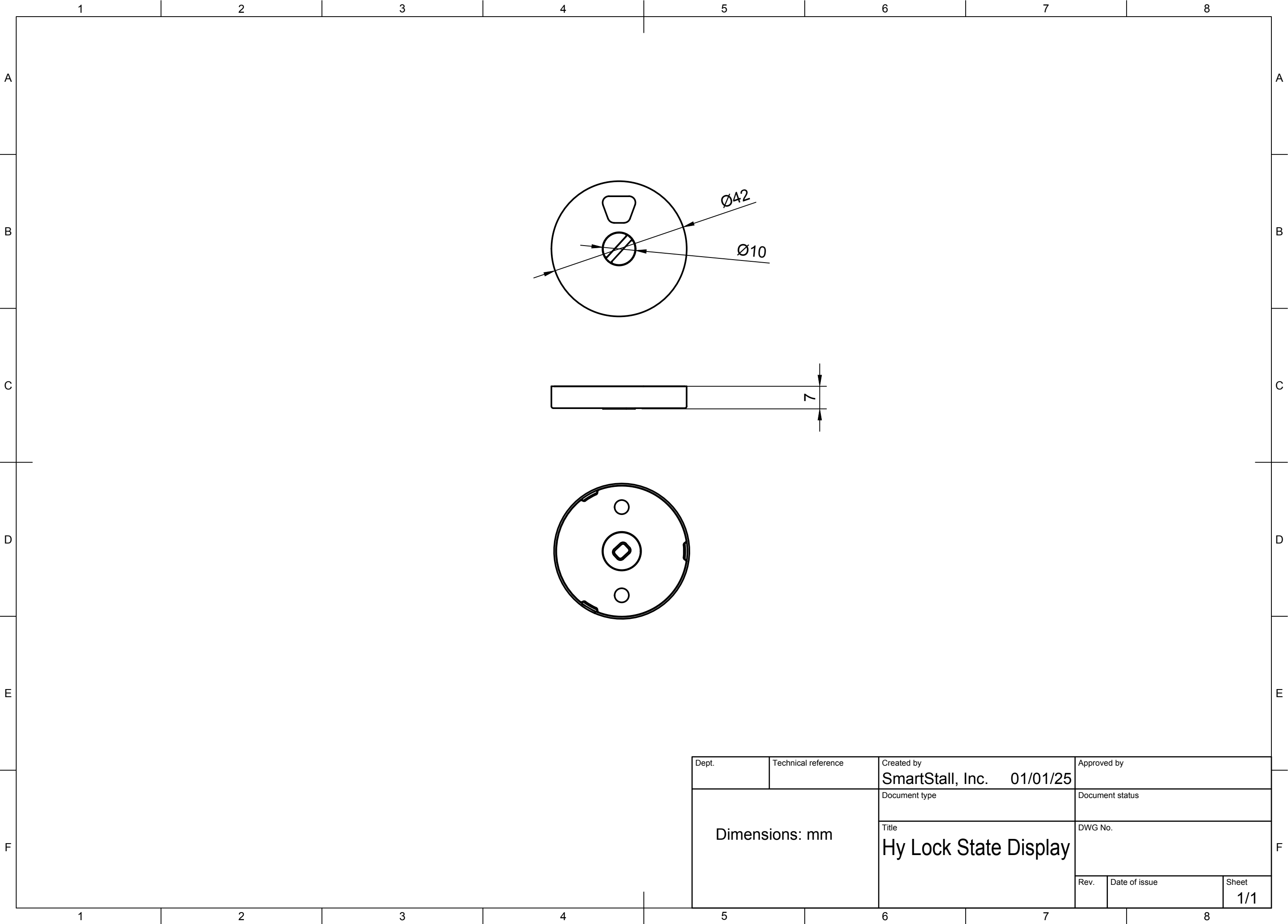
**Size:** See Specs

**Weight:** ~1 lb

**Material:** Corresponding Metal, Metal Alloy, ABS, Nylon

**Batteries:** 4xAA





Dept.	Technical reference	Created by SmartStall, Inc. 01/01/25	Approved by	
Dimensions: mm		Document type	Document status	
		Title Hy Lock State Display	DWG No.	
		Rev.	Date of issue	Sheet 1/1

Hy Lock Inswing Hole Location Dimensions

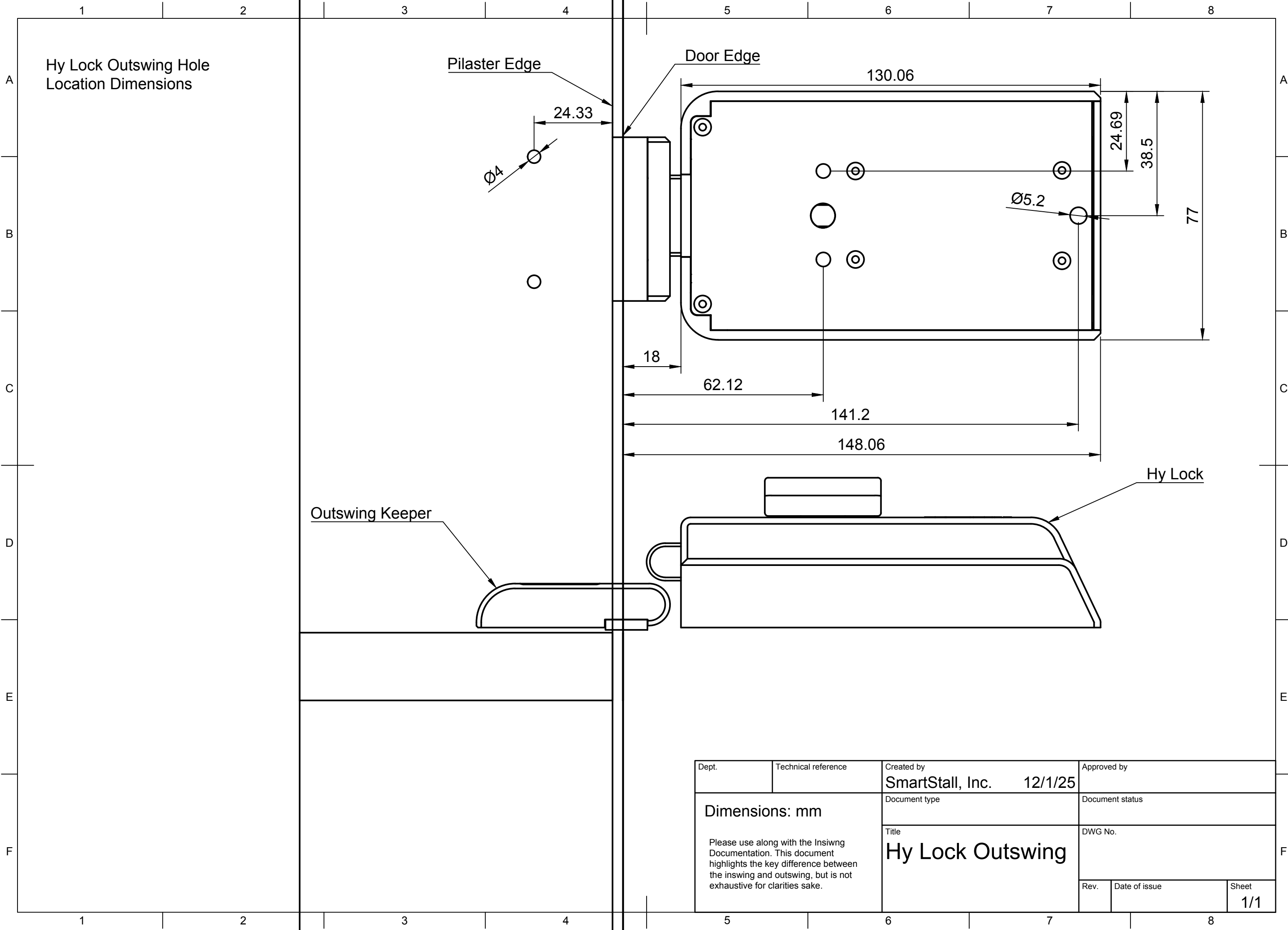
The drawing illustrates the hole locations for a Hy Lock inswing door. It includes a side view of the lock mechanism and a top view of the door plate. Dimensions are provided in inches and millimeters.

**Dimensions:**

- Door Edge
- 8.5
- 33.75
- 5.0
- 11.6
- 44.12
- 123.2
- 5.0
- 24.69
- 13.81
- 24.91
- 5.0
- 3.0
- 3.0
- 5.0

Dept.	Technical reference	Created by	Approved by
		SmartStall, Inc. 11/26/25	
Linear dimensions: mm Diameters: in		Document type	Document status
		Title	
		Hy Lock Door Holes	
Rev.	Date of issue	Sheet	
		1/1	

Dept.	Technical reference	Created by SmartStall, Inc.	11/26/25		Approved by		
Linear dimensions: mm Diameters: in		Document type		Document status			
		Title Hy Lock Door Holes		DWG No.			
				Rev.	Date of issue	Sheet 1/1	



Dept.	Technical reference	Created by SmartStall, Inc. 12/1/25	Approved by	
Dimensions: mm  Please use along with the Insiwng Documentation. This document highlights the key difference between the inswing and outswing, but is not exhaustive for clarities sake.		Document type	Document status	
		Title Hy Lock Outswing	DWG No.	
		Rev.	Date of issue	Sheet 1/1